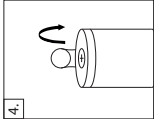


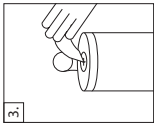
1. Remove lid by lifting upward.

2. Pull towel from center of roll through "x".

3. Put lid back on canister, pull towel to remove.



4. Close hinged cap to prevent towels from drying out.



#### DIRECTIONS:

Unfold towel and use rough side to scrub hands or surface, then use smooth side to wipe away grease and grime. No need to rinse or dry hands. Discard after use.

#### KEEP OUT OF REACH OF CHILDREN

**FIRST AID**  
If irritation develops, discontinue use immediately.



DO NOT FLUSH

**Disposal:** Offer empty container for recycling. If recycling is not available, discard container in trash.



**INGREDIENTS (CAS#):** Water (7732-18-5), Butyl-3-hydroxybutyrate (53605-94-0), Linear Primary Alcohol Ethoxylate (68439-46-3), Sodium Laureth Sulfate (9004-82-4), 1,2,3-Propanetriol (56-81-5), Ethanol (64-17-5), Fragrance.



# HD HAND WIPES

## Heavy Duty Hand Wipes

**HD Hand Wipes** contains 72 premoistened, dual-texture, 10" x 12" wipes. A rough side for scrubbing and a smooth side for wiping. The heavy-duty formula will dissolve grease and oil without irritating skin.

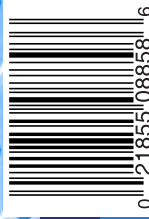
**HD Hand Wipes** are fortified with an emollient, so they won't crack or dry hands and have a pleasant cherry fragrance.

### KEEP OUT OF REACH OF CHILDREN

**CAUTION**  
See First Aid Statement on Side Panel

## 72 Wipes (10" x 12")

Detco Industries, Inc.  
Conway, AR  
1-800-282-2133  
www.detco.com



0 121855 08856 16

0885-006